

Hello!

We're delighted that you're thinking of visiting the Eden Project! Did you know that arriving by coach is one of the 'greenest' ways to visit us? We hope this leaflet will enable you to get the most from your visit and look forward to welcoming you very soon!

Best wishes
The Eden Team



NEW!
Rainforest
LOOKOUT



What is the Eden Project exactly?

Described as the eighth wonder of the world, the Eden Project is an exciting, inspiring playground in which to explore our relationship with nature. First and foremost Eden is a garden, the most incredible, amazing garden you'll ever visit! Those famous Biomes contain the largest rainforest in captivity and a Mediterranean paradise, plus there's our fabulously landscaped 'roofless' Biome to explore. You'll see cutting edge art and architecture and learn about plants that have changed the world. Eden is also a living example of regeneration and sustainable living. Find out how we turned an exhausted clay pit into a horticultural heaven!

Did you know the Eden Project is a charity?

Eden is also an educational charity – all the profits go to the Eden Trust to support projects working towards a sustainable future.

Food

Eating at Eden is part of the experience. Our food is freshly cooked on site using local, fairly traded or organic produce where possible. We cater for vegetarians, vegans, meat-eaters and gluten free diets. We have a range of cafés and restaurants catering for every taste and budget.



Retail

We have a shop in the Visitor Centre and also in the Link Building which you'll find between the Biomes. You'll find an incredible range of books, clothing, seeds, gardening tools and wonderful food to take home. Don't forget to visit our plant deck - take home your very own piece of Eden!

Map



Access

The Eden Project is fully accessible to all and won the Readers Choice Award at the 2010 Rough Guide to Britain Awards. It is only a few minutes walk from the dedicated coach drop off point to and from the Visitor Centre entrance. If you have any concerns about mobility just speak to one of our stewards on arrival and they will be happy to assist. We have powered and power-assisted wheelchairs available which can be booked in advance by calling 01726 818895. We recommend booking these 2 weeks in advance of your visit.



Horticultural Highlights

Spring

Eden erupts in a riot of colour after the long winter. Daffodils are among the first to emerge, painting the outdoor landscape in swathes of sunny yellows before tulips take centre stage in mid-March. In late spring the focus turns to the Mediterranean Biome where plants from South Africa, California and the Southern European regions will be at their blooming best until the end of April.

Summer

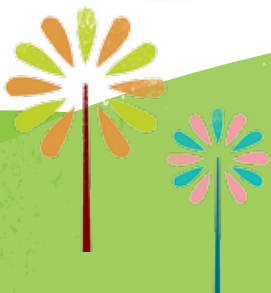
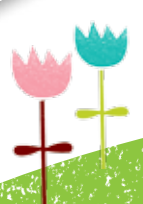
Our spectacular wildflower displays are a sure sign that temperatures are rising and the days are getting longer. The outdoor beds and borders are stunning at this time of year as summer classics, like foxgloves, delphiniums and sweet peas, burst into flower. In the Rainforest Biome tropical fruits can be seen, including jackfruit and papaya, while the scents of a Mediterranean summer, oregano and thyme, drift through the Mediterranean Biome.

Autumn

September heralds the start of one of the best seasons to visit Eden, as the outdoor landscape takes on the golden hues of the season. With an abundance of produce ripening in the late summer sun, our Global Gardeners allotments come into their own. Here you'll find a whole host of plants from courgettes, herbs and onions to more unusual edibles like sweet potato, scorzonera and amaranth.

Winter

Midwinter is never bleak at Eden! Anemones, crocus and snowdrops all brave the winter chill to peep through the cold earth. As dusk falls the site transforms into a winter wonderland complete with twinkling lights and ice rink. Escape the cold among the palm trees and tropical plants of the Rainforest Biome where the average temperature can reach a balmy 28 degrees!



We're 10 years old in 2011!

In 2011 we'll be celebrating our tenth birthday! It's hard to believe it, but the first visitors walked into the Biomes on 17 March 2001. Since then we've welcomed over 12 million visitors, so 2011 is the perfect time to come back and see how we've grown. If this is your first visit, or if you haven't been for a few years, you'll be particularly amazed at the outdoor landscape and Med Biome which have matured hugely since those early days.



During the school holidays

we offer a wide range of events for all the family, so whether you're 9 or 90 there's always something new to see. Here's what we have planned for 2011.

Shaun the Sheep's 'Championsheeps'

9 April - 25 April

Join Shaun the Sheep and his friends for our farmyard sports day with Aardman Animations.

Freaky Nature

28 May - 5 June

Discover a reality so bizarre you couldn't make it up. You'll find all sorts of freaky features plants have developed including sticky, spiky, carnivorous, smelly and even exploding plants. Plus, new for 2010 we're investigating the world of pool!

Summer Family Fun

27 July - 4 September

Take a walk on the wild side with den building, and all sorts of other family activities.

Halloweden

22 October - 30 October

Our ice rink returns for half term with a spooky theme. We also have separately ticketed Halloween-themed events including our Little Monsters' Ball for Under 12s and an event very much for over 12s where you can take a terrifying trip through our Rainforest in total darkness complete with scary soundscape and dramatic encounters - not for the faint hearted!

A Time of Gifts

31 October - 10 February

Our magical winter festival returns. During November we focus on the preparations for Christmas. In December, come and celebrate the festive season with evening lantern processions, Cornish choirs singing carols and of course, delicious festive food and drink.

