

# The Jungle Trail

## Look and Discover



When you are on your journey around the Biome, can you find any of these leaves?

# Welcome to the Rainforest Biome



Walk past the big boat that brings us plants from the rainforest we use every day.  
What's in the boxes?

Hot, wet and soggy...



Feel



The plants in here like it to be hot and wet.  
How do you feel?  
Their leaves are large, dark green and shiny.  
Draw a picture of your favourite leaf.

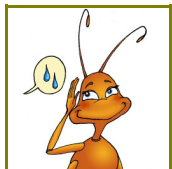


Can you find the name of this plant?  
Describe the leaves.  
What do they feel like?



Touch

Hear



Can you hear water running?  
Where is it coming from?

Look



What plants can you see that give us food?



Chocolate



Papaya



Pineapple



Banana

Tick the boxes when you see these plants ✓

# Flower Power

Plants wear their beautiful flowers and perfumes to attract creatures to help them.

Draw a flower that you find.



# Be a Plant Detective

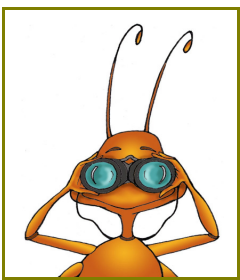
Can you find any plants that match the colours below?



Write in each box how many you find.

# Catch a Ride!

Trees grow very fast in the rainforest. They have a race to see which can get to the sunlight the fastest.



Look

Can you find the Bamboo plant?  
Giant Bamboo can grow 45 cm per day!  
How many hands would that measure?



Use the ruler to measure your hands and then add them together.»»

Look up to the roof of the Biome.  
Tick the shapes you can see.✓



1 cm

2 cm

3 cm

4 cm

5 cm

6 cm

7 cm

8 cm

9 cm

10 cm

11 cm

12 cm

13 cm

14 cm

15 cm

16 cm

17 cm

18 cm

19 cm

## Funny and Wonderful

The rainforest has many funny and wonderful plants.

Write your favourite two in the box.

--	--

Design a plant or animal...



From what you have discovered today, design your own rainforest plant or animal.

What is the name of your rainforest plant or animal?

---