

# WORKSHOP SUMMARY

## Jungle Connections

*Students are challenged to explore their connections with the rainforests of the world. By exploring Eden's own jungle, and by examining issues associated with trade, we find out about our power as consumers and gain a deeper understanding of our global inter-connectedness.*

**How long?** Two hours

**Who?** Y7-9. Geography and Citizenship

**Where?** The Core workshop room and Rainforest Biome

### Students will:

- Study the importance of the rainforest as a living ecosystem and rich resource.
- Explore connections between our lives in the UK and the rainforest.
- Develop their understanding of ways in which we can positively influence these relationships.

## Curriculum Links

KS 3 Geography

### Key concepts

1.1a, 1.2a, 2b, 1.4a, 1.4b, 1.5a, 1.6a, 1.6b, 1.7a, 1.7b

### Range and content

c, d, e, h

KS 3 Citizenship

### Key concepts

1.1b, 1.2a, 1.2b, 1.3c

### Key processes

2.1a, 2.2a, 2.2b, 2.2c, 2.3a, 2.3a, 2.3c

### Range and content

a, e

### Curriculum opportunities

a, c, g

KS 3 Science

### Curriculum opportunities

e

### Range and content

3.4c

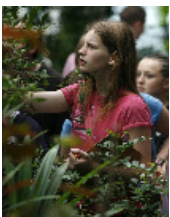
**PLTS** - This workshop covers a range of PLTS (Personal, Learning and Thinking Skills) objectives including independent enquiries, team workers and creative thinkers.

## What happens?

The challenge starts with a review of students' knowledge of rainforests and a hands-on activity to stimulate thinking about our connections to the rainforest and some of the associated issues. Students spend up to an hour in the Rainforest Biome, experiencing the reality of the tropical climate and finding further examples of their rainforest connections.

On returning to the Core we take the story of chocolate as an example for analysing trade relationships in more detail and investigating our power as consumers to make a difference.

## Practicalities



Please ensure your group is divided into workshop teams, each with an adult helper. Our Education Team will lead your workshop session, but the participation of your staff is essential to the success of our programmes. We provide all the equipment for the workshop.

Our programmes are focussed learning experiences, they do not provide a general introduction to Eden Project, so please allow sufficient unstructured exploration time for your students during your day.

Additional information is on our website  
[www.edenproject.com](http://www.edenproject.com)

## Jungle connections – Ideas to support your visit

### Before you come

Preparatory work could include the following

- Use atlases to locate the tropical rainforest of the world.
- Find out about the following aspects of rainforests;
  - The physical conditions (temperature, humidity, rainfall)
  - Structure of the rainforest- tree canopy, understorey etc.
  - Indigenous peoples – and how they survive in the rainforest.
  - Animal life in tropical rainforests
- Students could use the information they have collected about rainforests to produce a class quiz.
- Students could record all the food they eat in a day and use the packaging, ingredients lists and the internet to research where in the world the different ingredients might have come from. Students could plot the locations on a map of the world.

### Follow up

- Students could focus on the production of a specific food that comes from tropical regions for example: Soya, Palm Oil, Sugar Cane. They could focus their research with a view to answering the following questions:
  - Where are the main areas of production?
  - How are the products are processed and who by?
  - How much money do the people at the start of the chain make?
  - Where is the product shipped to?
  - What is the product used for?
  - Are their any issues surrounding the product, for example to do with sustainability?

### Useful websites

[www.oxfam.org.uk/education/](http://www.oxfam.org.uk/education/) Oxfam provide an excellent bank of resources for studying issues relating to trade and sustainable development. These include assemblies, case studies (e.g. The Coffee Chain Game), lesson plans, and interactive whiteboard simulations (e.g. 'Milking it').

[www.foe.co.uk](http://www.foe.co.uk) Friends of the Earth are currently running a campaign called 'Fix the Food Chain' which looks at the links between soy production and rainforest destruction. For up to date information about rainforest and food production issues look at the 'Natural Resources News' and 'Environmental Justice News' pages.

[www.scienceacross.org](http://www.scienceacross.org) Science Across the World is an Association of Science Education initiative which allows students from different countries to exchange information, opinions and ideas on a variety of science topics. The 'Plants in Our Lives' topic explores our dependence on plants and their economic uses relating to trade. Further work looks at issues relating to biodiversity and protection of plants.

[www.fairtrade.org.uk](http://www.fairtrade.org.uk) The Fairtrade Foundation's website provides a variety of resources covering different curriculum areas. In particular it has really useful content which looks at the impact that Fairtrade has on farmers and producers in developing countries.

[www.rainforestsos.org](http://www.rainforestsos.org) The Prince's Rainforest Project aims to identify incentives to encourage rainforest nations to slow their deforestation rate and to raise awareness of the link between rainforests and climate change. This website contains a wealth of great teaching resources and materials for students which are free to download.