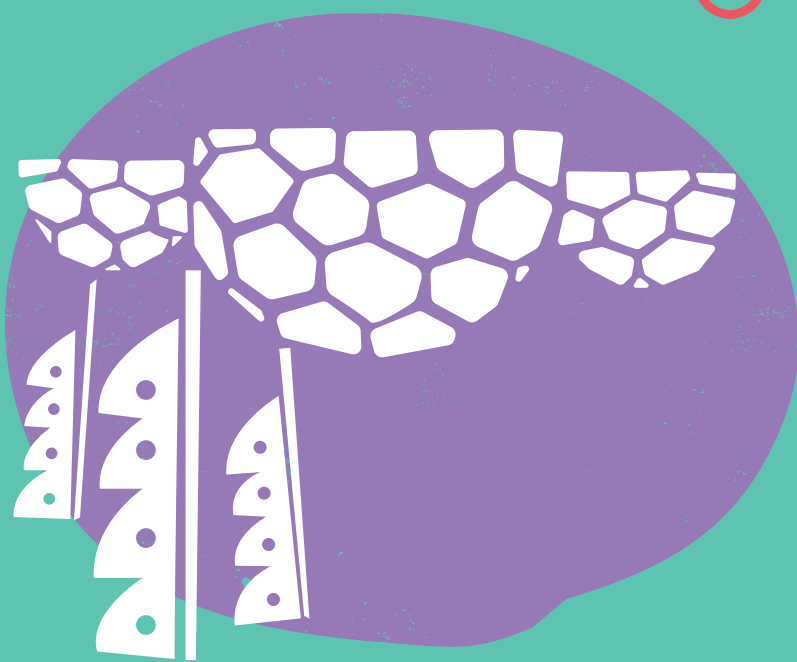




EDENPROJECT.COM/SCHOOLS



EDEN PROJECT PROGRAMME FOR PRIMARY SCHOOLS



eden project



EDEN FOR PRIMARY SCHOOLS



Outstanding, curriculum-focused school trips in our unique learning environment: Eden provides immersive learning in, about and for the natural world. By connecting with the living world and with each other, young learners develop the knowledge and skills to be stewards of the planet.

100% of teachers we asked who brought school trips here last year would recommend a visit to their colleagues.

LEARN

Education Officer-led workshops and talks – let our workshop leaders add colour and context to the curriculum, exploring Eden and its themes. Or lead your own visit to cover your specific requirements.

Find out more inside.

PLAY

- **Ice skating** – a magical winter treat (October–February). Includes exclusive school sessions, and skate-free ice-play for under 7s.
- **Nature's Playground** – Our spectacular new natural adventure play area is just next to our schools' base in the Core. It's wet, wild and wonderful – bring waterproofs!



WHY EDEN FOR YOUR SCHOOL VISIT?

- **Learning-focused** – Our specialist Education Officers ensure maximum learning and enjoyment for your pupils.
- **Memorable** – Give your pupils a real taste of the rainforest and discover what we can do to make a positive difference for people and planet.
- **Safe and Convenient** – Your school visit includes a welcome briefing and base, and a free pre-visit for you.



THE EDEN PROJECT IS A GLOBAL MOVEMENT WORKING WITH NATURE TO RESPOND TO THE PLANETARY EMERGENCY.



BOOK YOUR MEMORABLE
EDEN EXPERIENCE
EDENPROJECT.COM/SCHOOLS
EDUCATION@EDENPROJECT.COM
01726 811913

OFFERS EXPERIENCES THAT COVER SO MANY OBJECTIVES AND DEVELOPS CHILDREN'S SENSE OF AWE AND WONDER AT THE NATURAL WORLD AND HOW PRECIOUS IT IS – AND HOW VITAL THAT WE LOOK AFTER IT!

KS2 TEACHER, GORNALL

SUPPORTING NATURE-CONNECTED TEACHING AND LEARNING IN YOUR SCHOOL

ONLINE WORKSHOPS AND LIVESTREAMS

Our live lessons and livestream events are full of interaction and cover climate, rainforest and sustainability.

FREE LESSON PLANS

Our learning resources are designed to help teachers deliver National Curriculum requirements in ways that are nature-connected and sustainability-focused.

WILDFLOWERS IN SCHOOLS

Create space for nature, and for nature-connected learning, by planting wildflowers. Free training and resources to create and make the most of these special habitats using science, creativity and celebration.

TEACHER PROFESSIONAL DEVELOPMENT

Equip yourself to lead learning for a nature-connected, sustainable future. Our courses enable you to lead change for nature with your class and for your school, and are delivered in person and online. Or talk to us about bespoke sessions for your school or MAT.



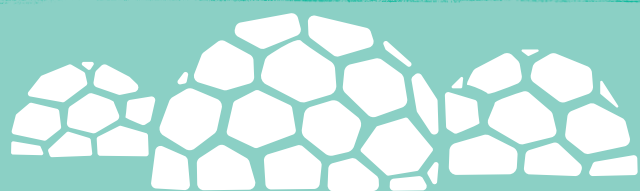
'AMAZING! SO MUCH FUN AND LEFT WITH GREAT IDEAS. VERY INSPIRING – THE BEST COURSE I HAVE EVER BEEN ON!'

PLAYFULLY LEARNING OUTDOORS
COURSE PARTICIPANT



CONTACT US

EDENPROJECT.COM/SCHOOLS
EDUCATION@EDENPROJECT.COM
01726 811913
EDENPROJECT.COM/NEWSLETTER



EDEN PROJECT PROGRAMME FOR PRIMARY SCHOOLS



THE EDEN PROJECT PROVIDES IMMERSIVE LEARNING IN, ABOUT AND FOR THE NATURAL WORLD. OUR FANTASTIC WORKSHOPS, LED BY SPECIALIST EDUCATION OFFICERS, BRING THE CURRICULUM TO LIFE, INSPIRING AND ENGAGING YOUR PUPILS WITH THE NATURAL WORLD, SCIENCE AND SUSTAINABILITY.

EYFS AND KSI

SENSORY JOURNEYS

A Pocketful of Eden

Following a participatory story-telling session with Eden's Education Officer, our sensory trail leads children to explore the Rainforest Biome with your adult helpers.

EYFS and year 1. Flexible timings

The Rainbow Route

Inspired by the colours of the rainbow, children take part in games to become bees ready to explore Eden and discover a palette of colours in nature.

EYFS and year 1. Flexible timings



SCIENCE & GEOGRAPHY

Green Machines

Learn about the parts of plants and their uses, before gathering facts and examples during a hands-on discovery walk around Eden.

Years 1 & 2. Up to 2 hours

Ready Steady Sow

Investigate seeds from around the world, where they come from and how they grow, before planting a seed to take home and care for.

Years 1-3. 90 minutes (March to June)

Building in Brazil

Explore Eden's rainforest comparing life in the UK and Brazil, before putting new knowledge to use to design and construct mini rainforest homes.

Years 1 & 2

KEY STAGE 2

RAINFOREST: GEOGRAPHY & SCIENCE

Rainforest Rangers

Pupils take up the challenge to become Rainforest Rangers by investigating the essential survival plants in Eden's rainforest, whilst learning about life in the Amazon.

Years 3 & 4

Puzzling Plants

Challenged by an intrepid plant hunter, pupils track down some of the rainforest's peculiar plants and discover the reasons behind their seemingly puzzling behaviour.

Years 3 & 4

Rainforest Uncovered

Join an expedition to learn from the Kombai people of Papua. Will pupils make contact with the Kombai and unlock the secrets to their survival, and ours?

Years 5 & 6

Darwin's Doodles – An Amazonian Odyssey

Join Charles Darwin on his voyage to South America. On the way, students hone their scientific skills and knowledge of evolution, adaption and interdependence.

Years 5 & 6

Brilliant Botanists

Can pupils impress the Eden bosses with their scientific enquiry skills to secure a dream job as a rainforest botanist?

Years 5 & 6

HISTORY, MATHS AND MORE

Ancient Greece and the Edenauts

Pupils journey through the Mediterranean Biome completing a series of challenges based around Greek mythology, plants and daily life in Ancient Greece.

History. Year 4-6

Finding Fibonacci

What connects pinecones, sunflowers and Eden's Core building? Discover nature's extraordinary maths by investigating the plants, art and architecture of Eden.

Maths. Years 5 & 6

CLIMATE, SUSTAINABILITY AND FOOD



Chocolology

Pupils uncover the secrets and history of chocolate through riddles, role play and exploring our cocoa plantation, in order to win a chocolate treat.

Geography, History, English. Years 2-4

Crazy Chef Challenge

Can pupils unravel the clues, find the plants and collect the ingredients to win the Crazy Chef's global cake?

Geography. Years 3 & 4

Climate Culture

Grounded in a solid understanding of the science, pupils investigate how Eden Project is becoming 'climate positive', and learn how they can be part of the solution.

Science, Citizenship. Years 5 & 6

The Great Plant Explorers

Products, plants, people, places – what are the connections? Using teamwork and mapping skills, pupils discover how Fairtrade can support growers around the world.

Geography. Years 5 & 6

Sustainability Sussed

Pupils explore Eden to discover the sustainability stories behind the food they eat touching on health, waste, packaging, food miles, farming and Fairtrade.

Geography, Science, Citizenship. Years 5 & 6



Potions and Commotions

Using outdoor games, creativity and craft, pupils use their senses to explore the natural world around them in unusual ways. (Outdoor session)

English, Art. Years 3-6

Storm Patrol: E-Den Challenge

Teamwork and tactics are the key to building a successful den that's spacious and strong enough to protect the team from the coming storm. (Outdoor session)

Design and Technology. Years 4-6

VISITING EDEN

Our workshops last two hours unless stated and cost £7.95 per pupil (including entry). The rest of the day is yours to explore all Eden has to offer. Alternatively, plan your own lessons and book an independent teacher-led visit from just £6.90 per pupil.

YOUR BOOKING INCLUDES:

- a welcome briefing and introduction to Eden
- space (possibly shared) to store your bags and eat lunch
- a pre-planning visit
- free adult entry (within our ratios)
- pre- and post-visit materials to support children's learning

WE ALSO OFFER

- Teacher-led visits – led by you to meet your specific requirements
- Ice skating and ice-play sessions (October-February)
- Virtual workshops and livestream events
- Professional development and resources for teachers – become a leader in nature-connected and sustainability-focused learning across the curriculum



CONTACT US

EDENPROJECT.COM/SCHOOLS
EDUCATION@EDENPROJECT.COM
01726 811913
EDENPROJECT.COM/NEWSLETTER

